

Easy Installer for AgriOcean DSpace – September 28, 2011

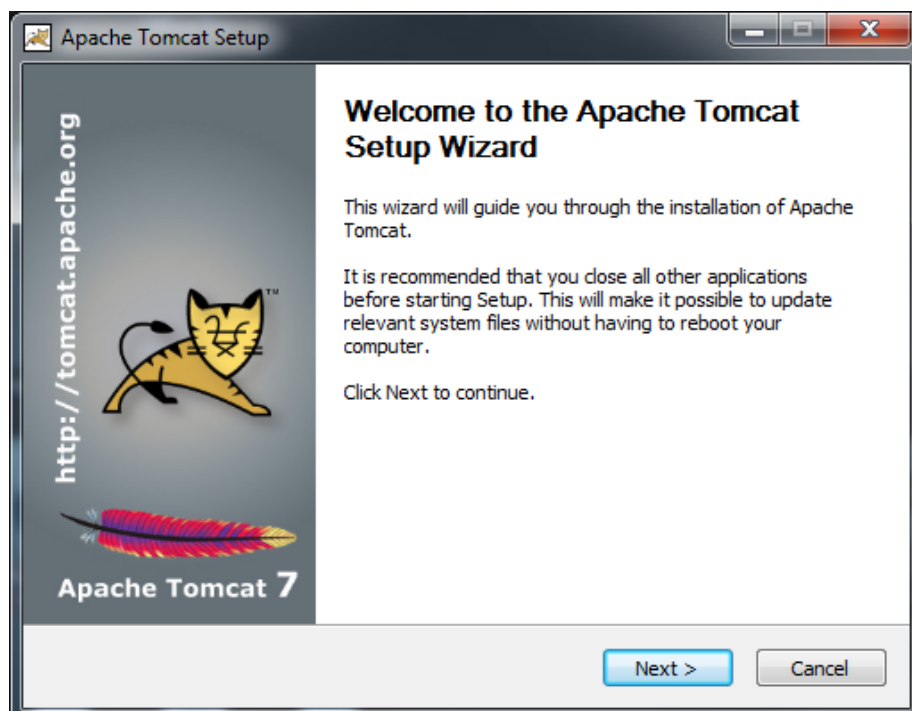
The installation in 5 steps

1. Install JAVA – JRE (If not already installed)	1
2. Installing Tomcat 7 (= application server).....	1
3. Installing Postgresql (= database)	5
4. Installing the AgriOcean Dspace application	8
5. Finalization: Starting up the AgriOcean Dspace application.....	14

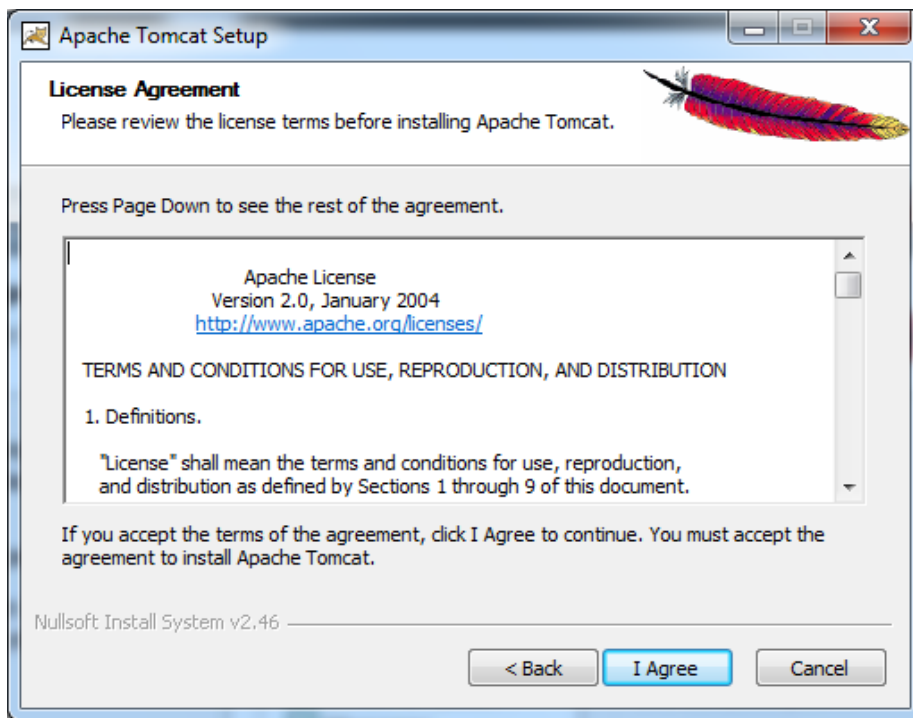
The installation steps explained:

1. Install JAVA – JRE (If not already installed)
 - Download from <http://www.java.com/>
 - If not installed automatically, run the downloaded file
2. Installing Tomcat 7 (= application server)
 - Download from <http://tomcat.apache.org/download-70.cgi>:
(select 32-bit/64-bit Windows Service Installer)
 - Click on the downloaded file (accept to run if Windows ask for that) and you will get the following screens:

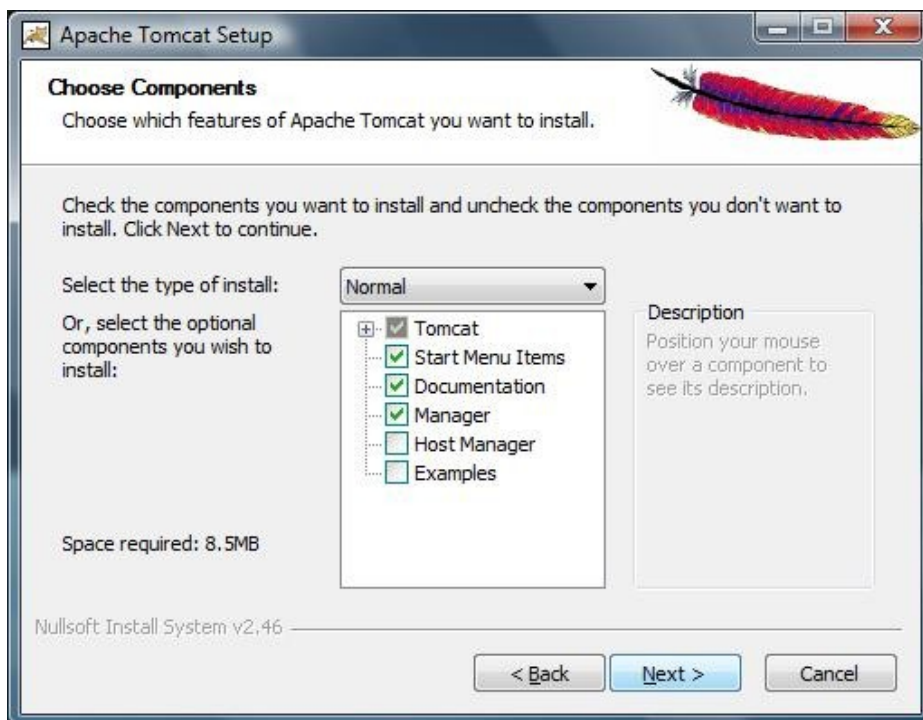
Screen 1:



Screen 2:

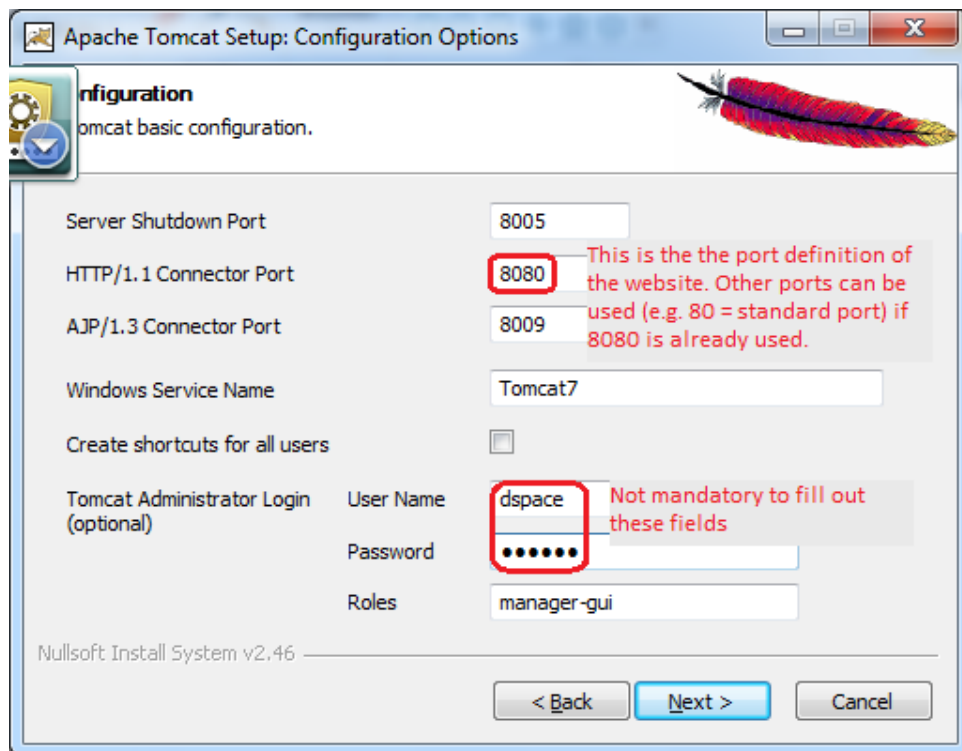


Screen 3:



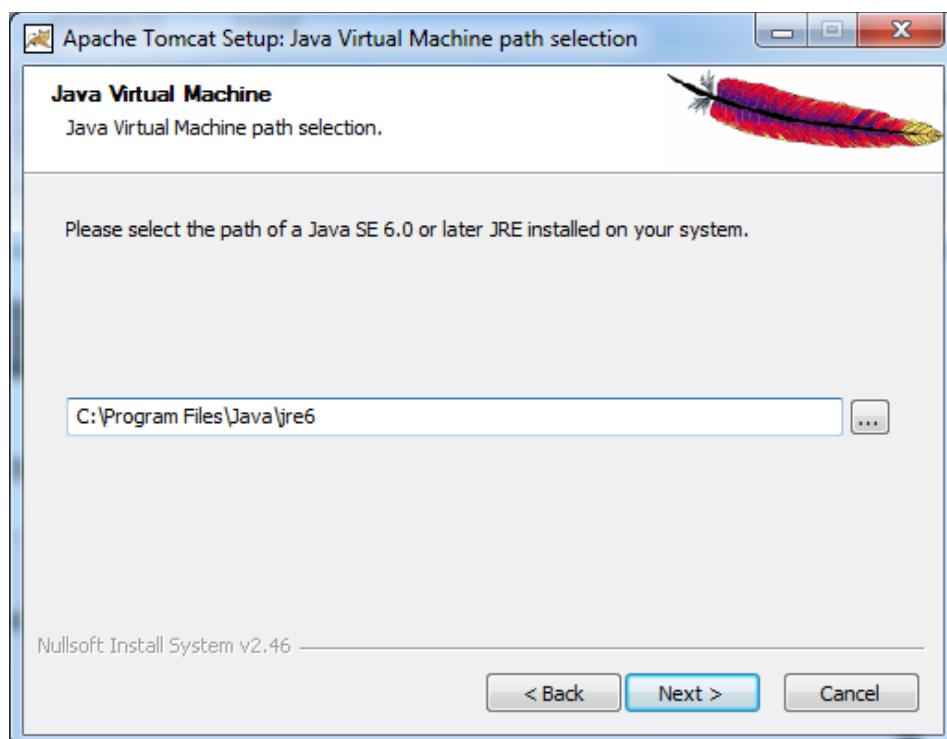
- Don't change anything on the standard settings

Screen 4:



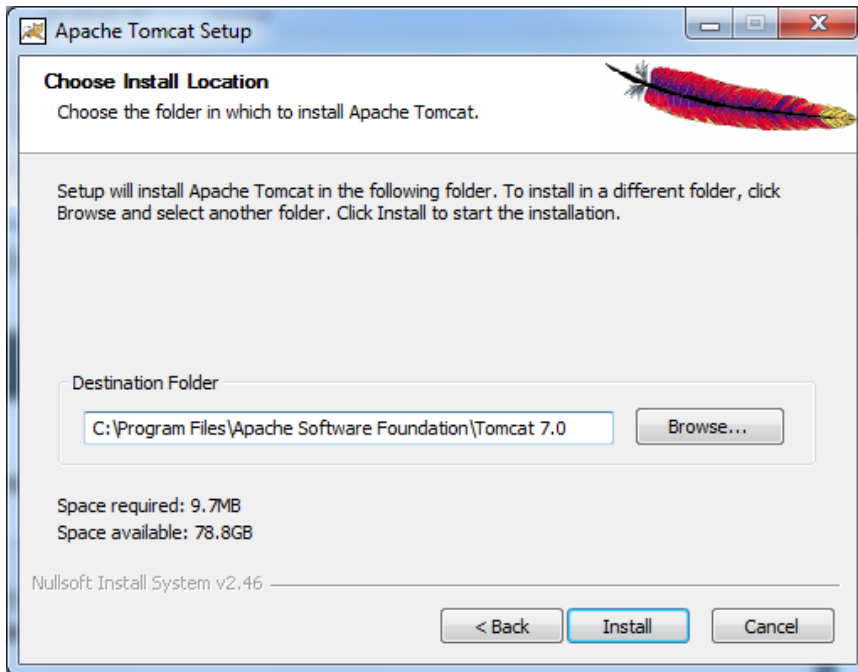
- Use port 8080 as HTTP/1.1 Connector Port. if you choose another port (80 – 8079 - ...) you need the same port definition in the dspace set up (see at p. 11, screen 6).
- Define a Tomcat administrator login (not mandatory)

Screen 5:



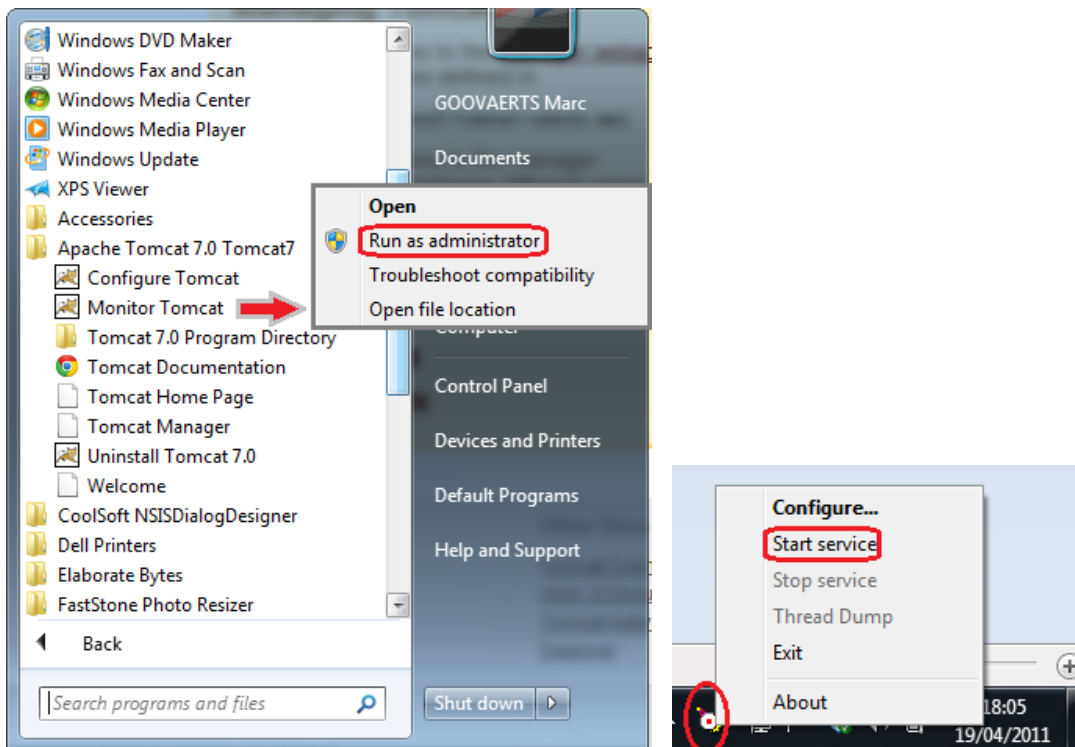
- JAVA is automatically recognized when available (no change necessary). If it is not yet installed, then no directory will be indicated. Stop the installation and go back to the beginning of the document.

Screen 6:



- Push on the install button and Tomcat will be installed

Windows Start menu :

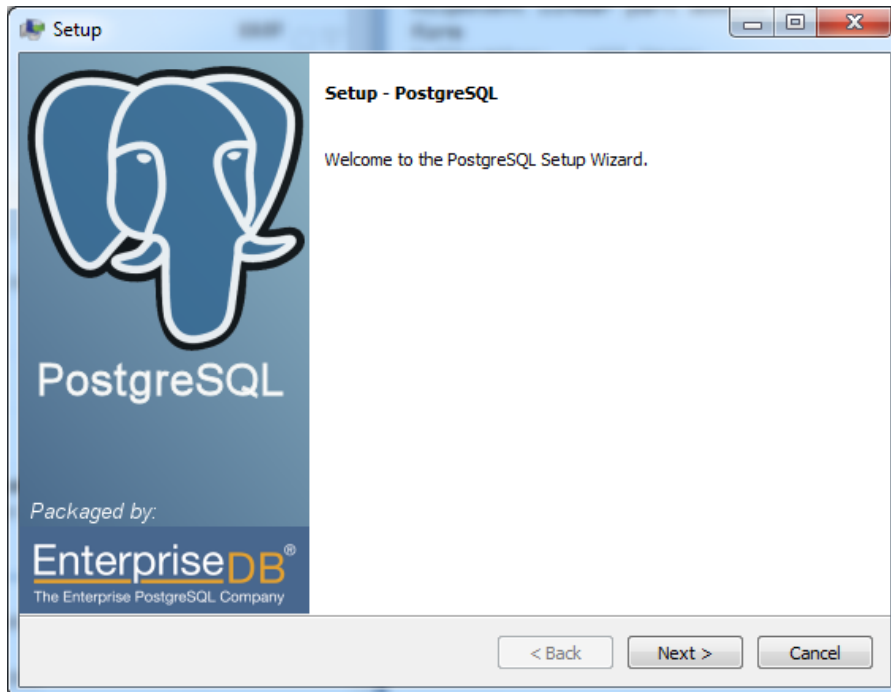


- With the Tomcat Monitor you can start and stop Tomcat:
 - Start the Monitor from the Start menu (Or under 'All Programs').
 - In the main toolbar you will find the Monitor Icon. With the right mouse button you can open the menu.
 - After installation it will run automatically for the first time only.
- **!! If Windows does not allow you to start up Tomcat (e.g. in Windows 7 Home version),**
 - You can run it as administrator (see above)
 - Or you have to turn off the User Account Control (see <http://www.techknowl.com/turn-off-uac-in-windows-7-user-account.html>).
 - Security in Internet Explorer makes it difficult to open localhost. Therefore it is easier to use Firefox, Chrome, Safari as browser.

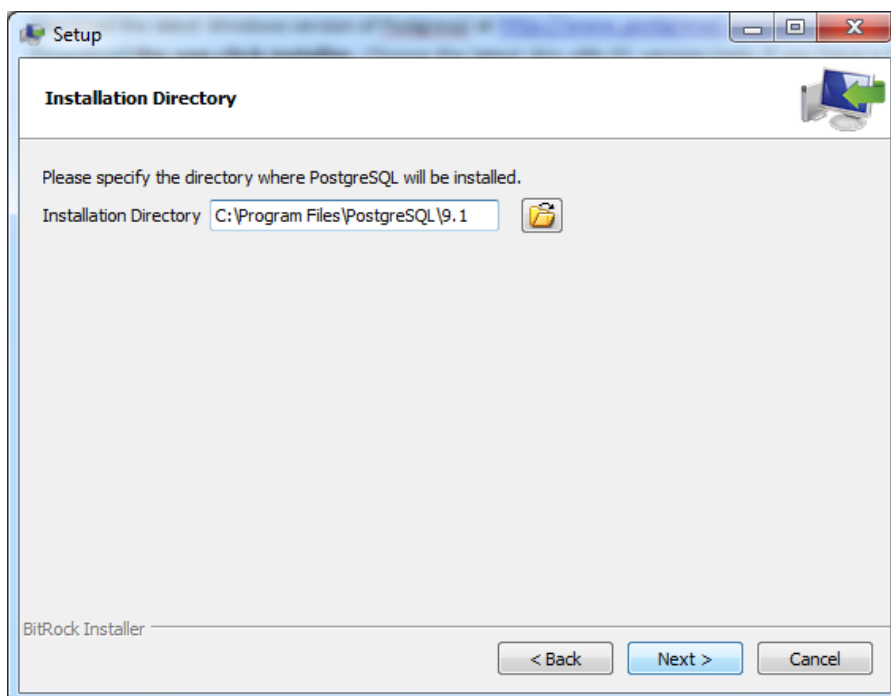
3. Installing Postgresql (= database)

- Download the latest Windows version of Postgresql at <http://www.postgresql.org/download/windows/>: **Download the one click installer**. Choose the latest Win x86-32 version (only if you have a 64 bit Windows, you can use a Win x86-64 version).
- Click on the downloaded file and you will get the following screens:

Screen 1:

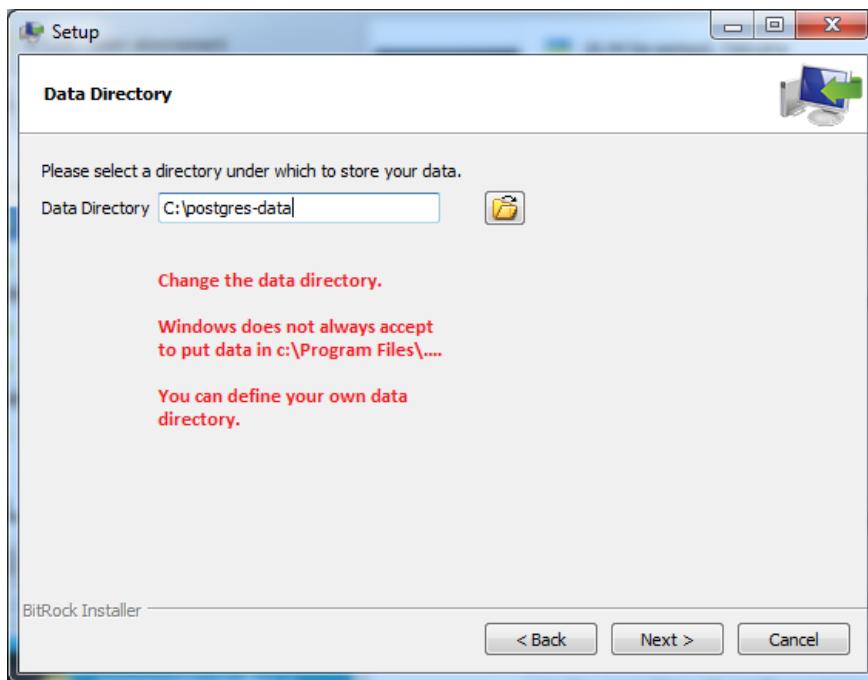


Screen 2:



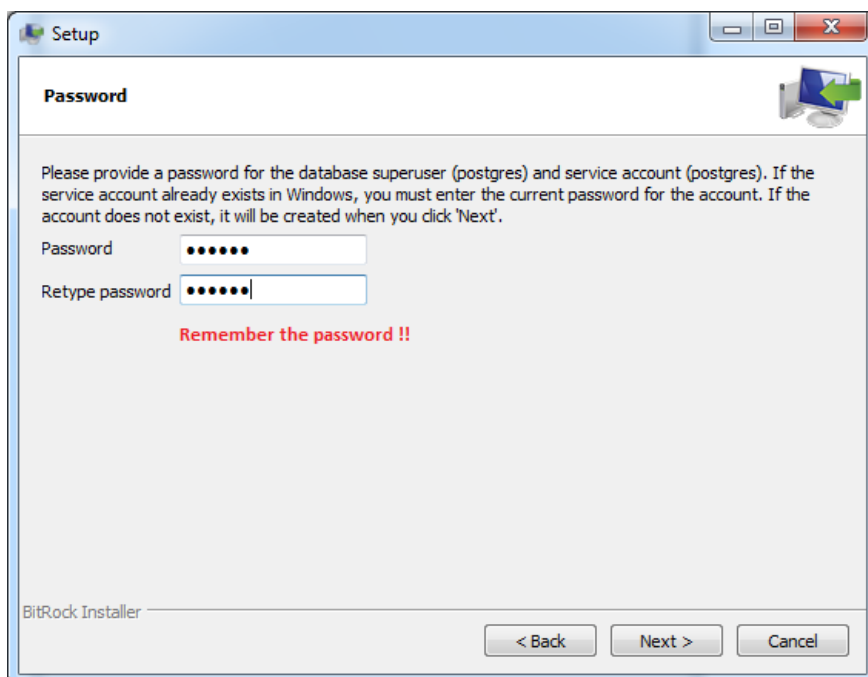
- Simply use the default definition.

Screen 3:



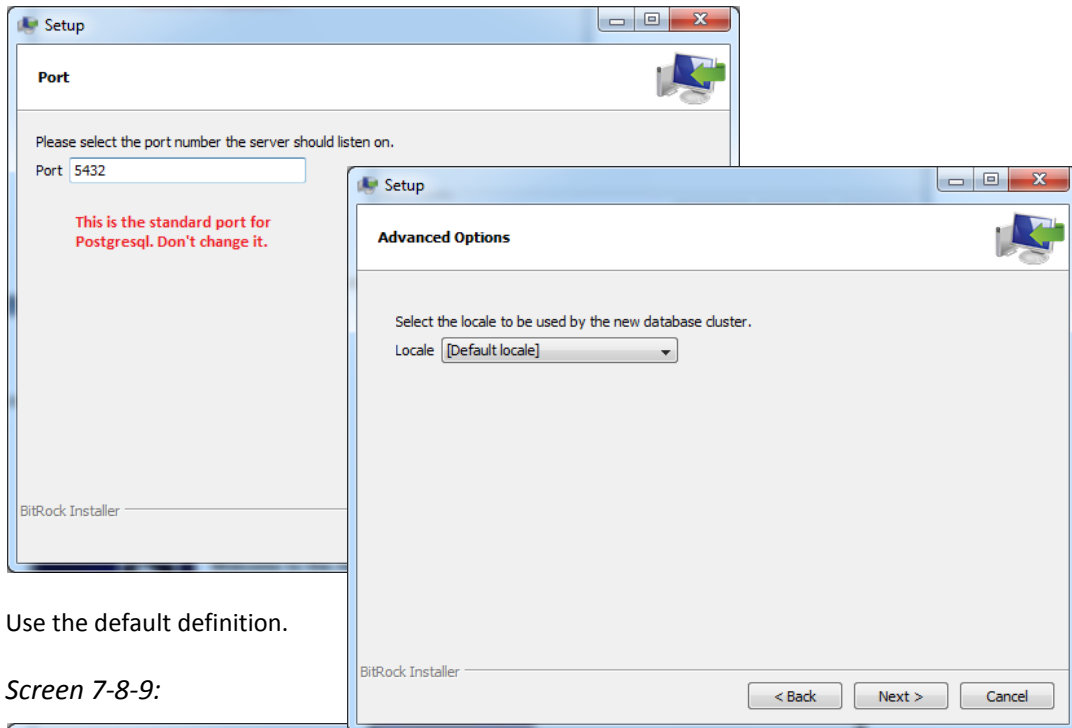
- Change the default directory. Create your own directory outside the 'Program files' and Windows' directories (and other reserved directories).

Screen 4:



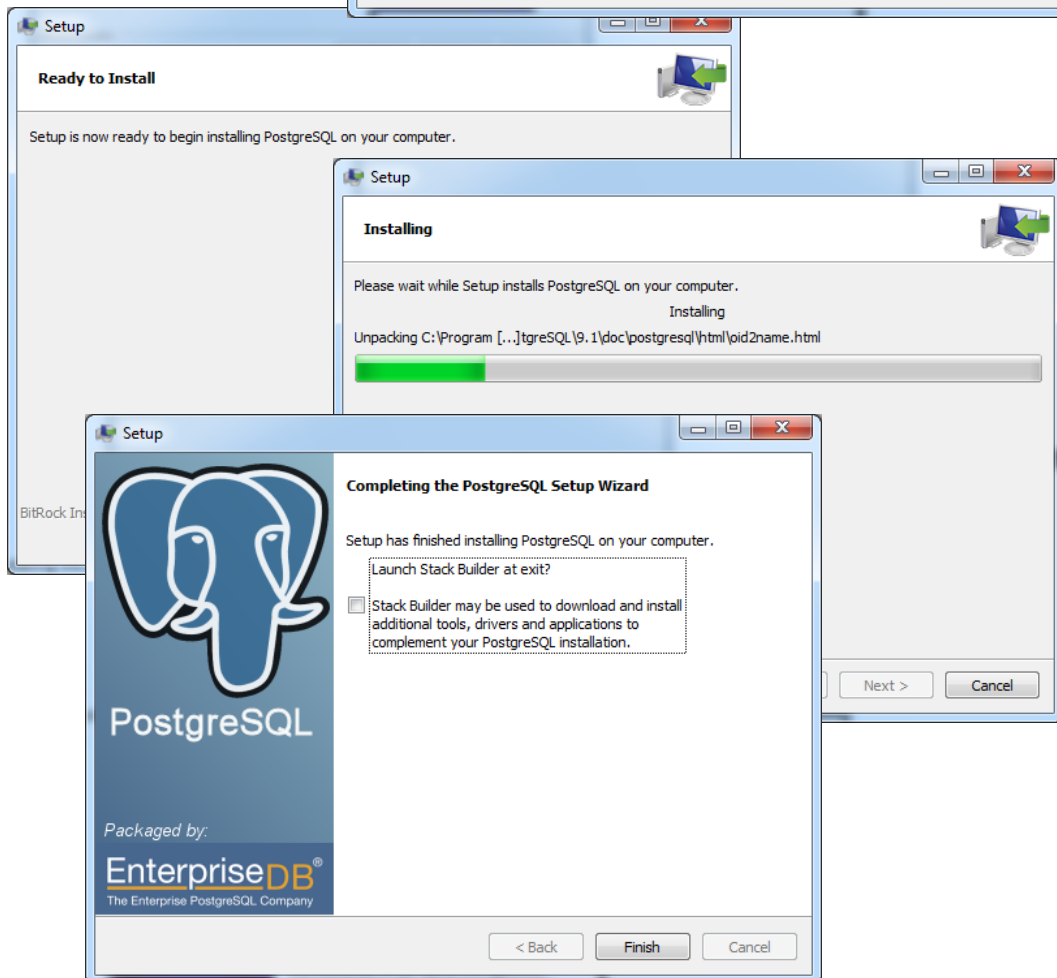
- Create your postgresql password. Don't forget it.

Screen 5-6:



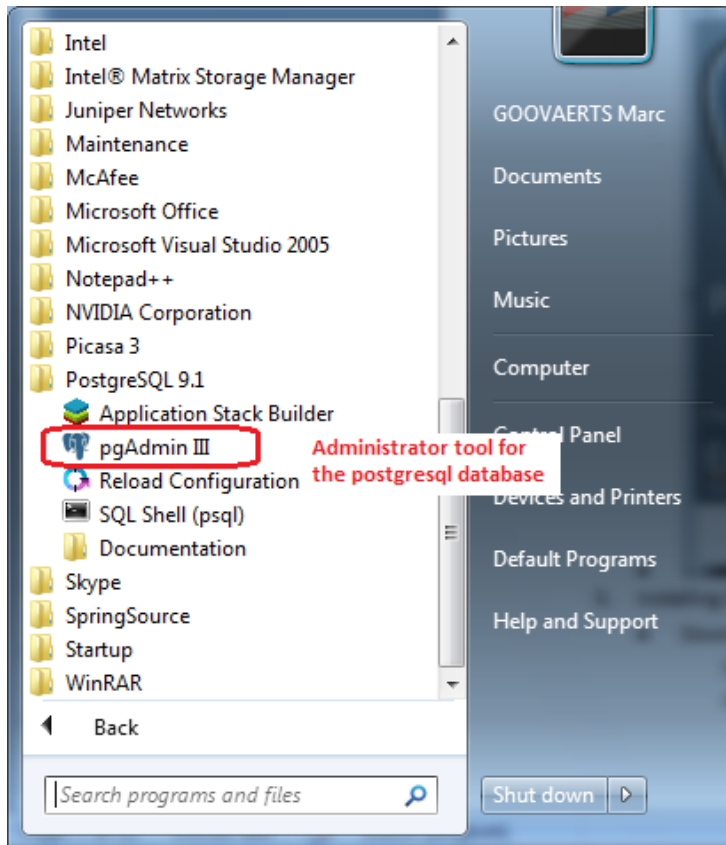
- Use the default definition.

- Screen 7-8-9:



- Finish the installation.

Windows (7) Start menu :

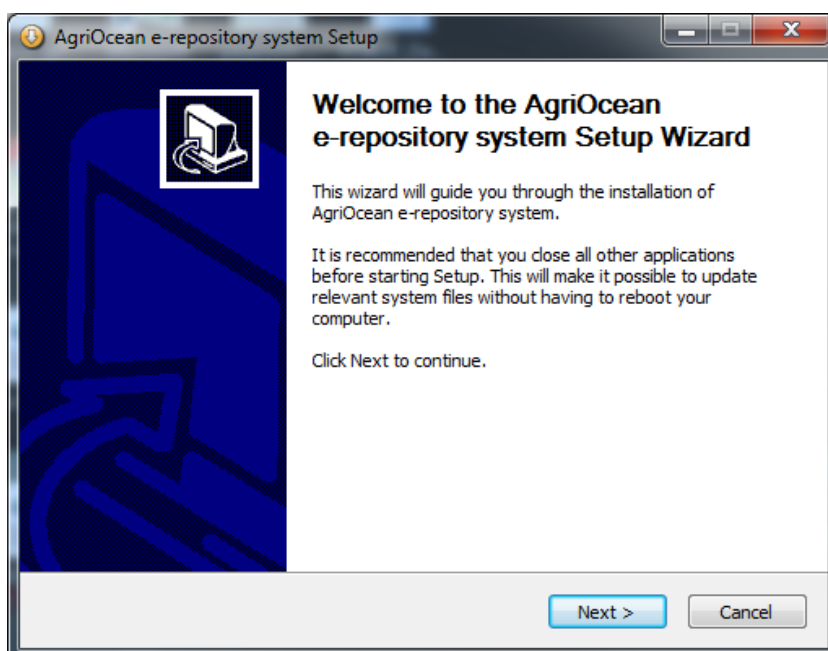


- You can manage postgresql with the pgAdmin III tool (Basics: <http://www.pgadmin.org/docs/1.14/using.html>)

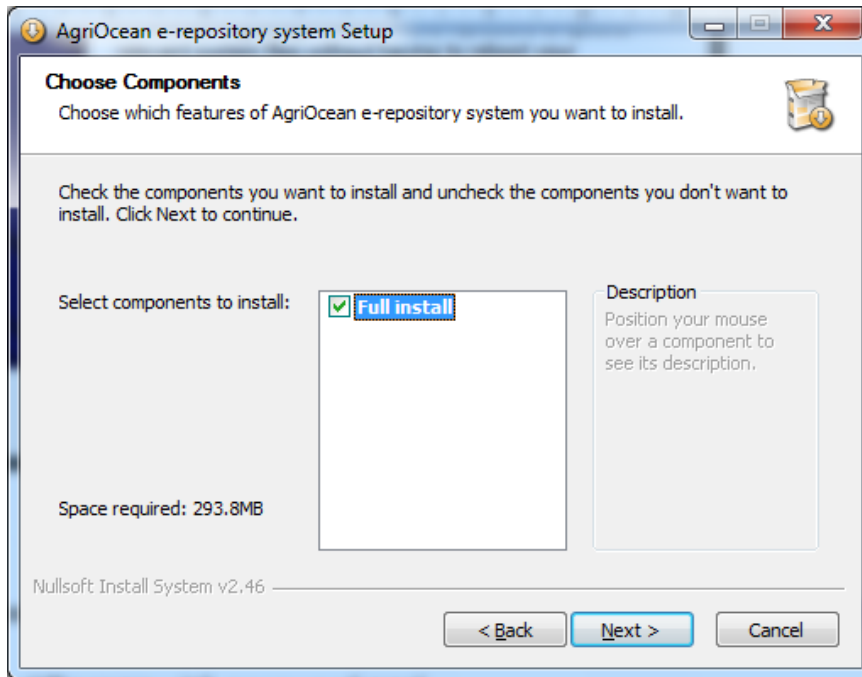
4. Installing the AgriOcean Dspace application

- Download from <http://code.google.com/p/agrioccean/downloads/list>: AgriOceanSetup1-2.exe
- Double click on the file and the Dspace installer will start.
- After filling out the necessary fields, click on nextfields

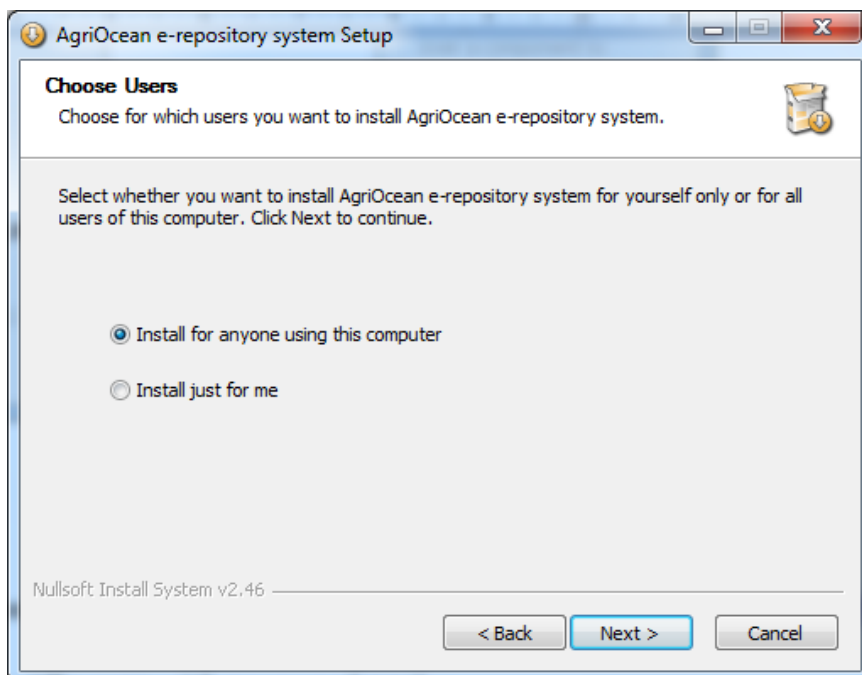
Screen 1:



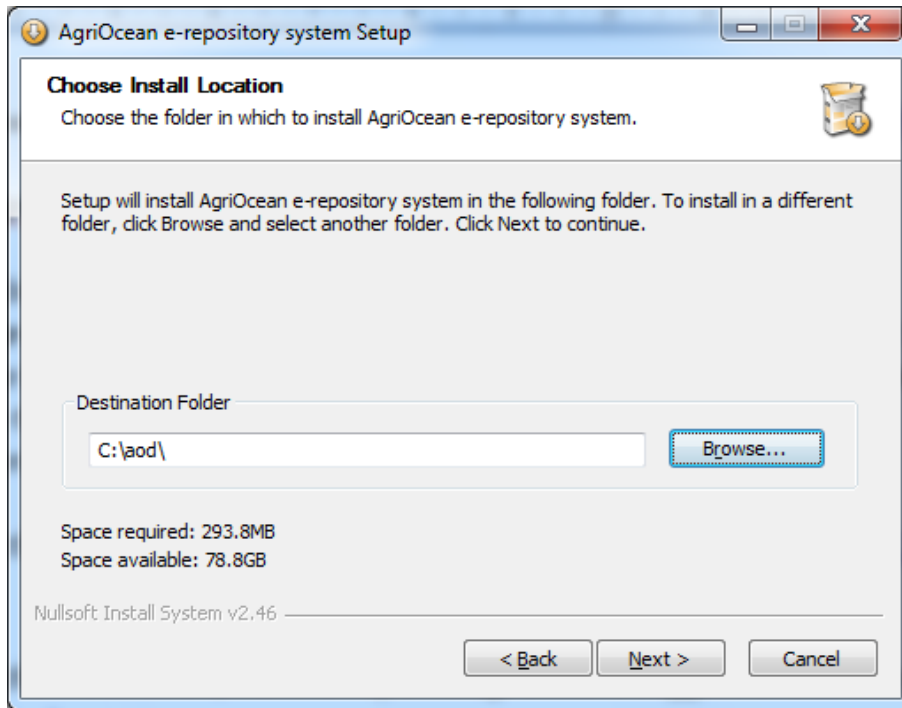
Screen 2:



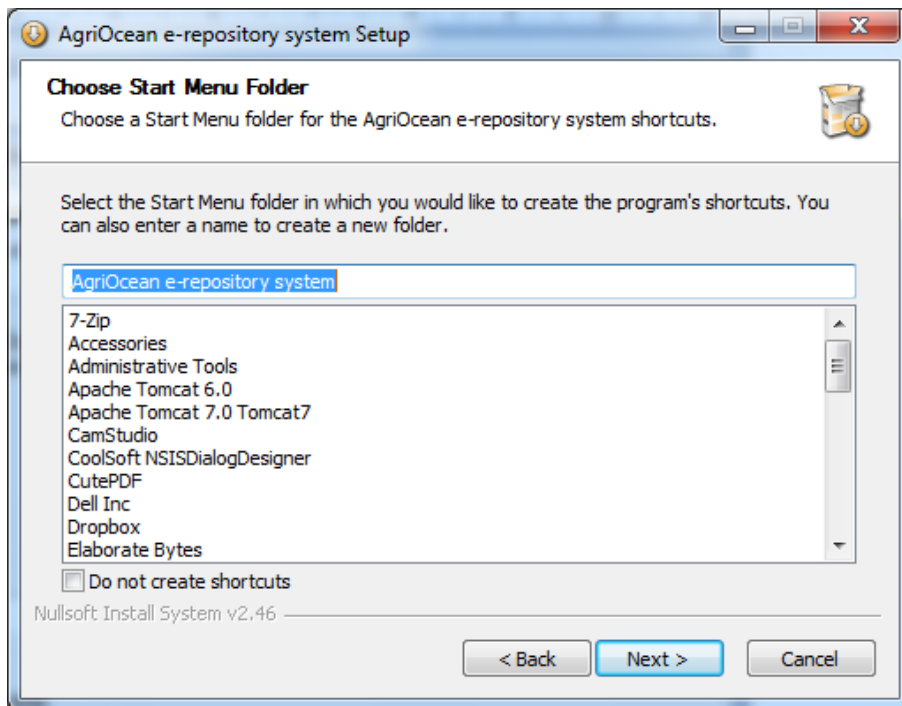
- Note: An update option will be created in the next version.
- Screen 3:



Screen 4:



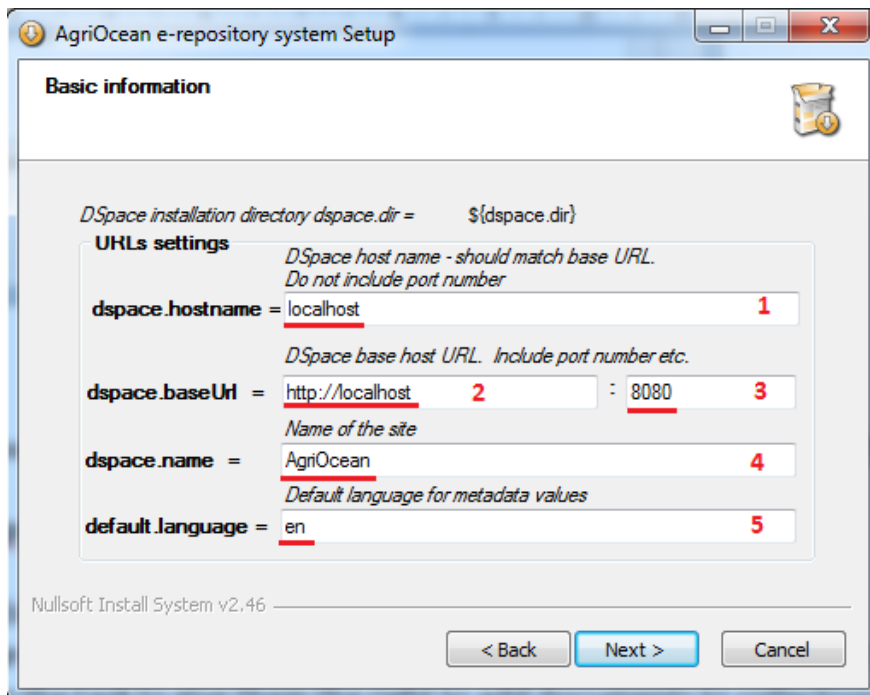
- We suggest to create a specific folder as destination folder (e.g. c:\aod\).
- Screen 5:



- The start menu will include the the uninstaller (For an easy reinstallation, you will need to delete the dspace database with pgAdmin III)

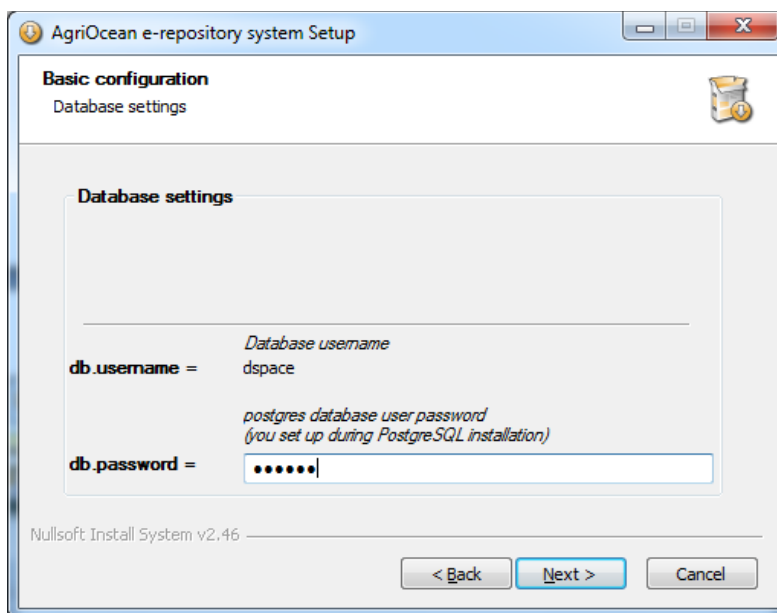
- In the following screens you can define the major configuration options of DSpace.
(This information will be written away in the file `c:\<agrioccean dir>\repos\config\dspace.cfg`)

Screen 6:



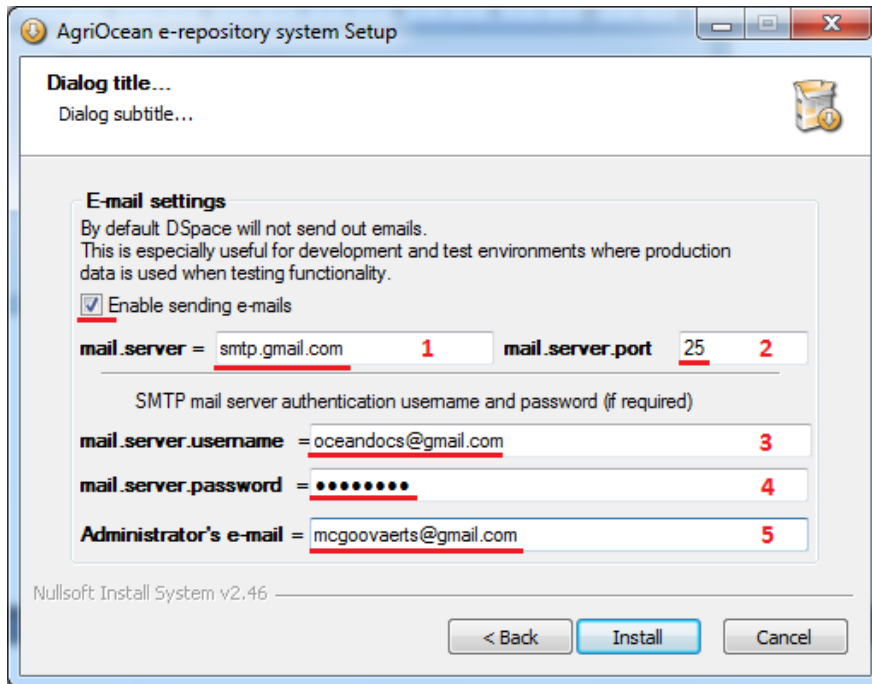
- With the default values you can set up AgriOcean DSpace on a computer locally.
- To change it to set it up as a web server
 - Enter the hostname or IP number of the server/PC. (1 – 2.).
 - To make it available on the standard port change it to port 80. (3).
 - In 4 you give a name to your repository.
 - Use the ISO639-1 code to define your standard language (http://en.wikipedia.org/wiki/List_of_ISO_639-1_codes) (5).

Screen 7:

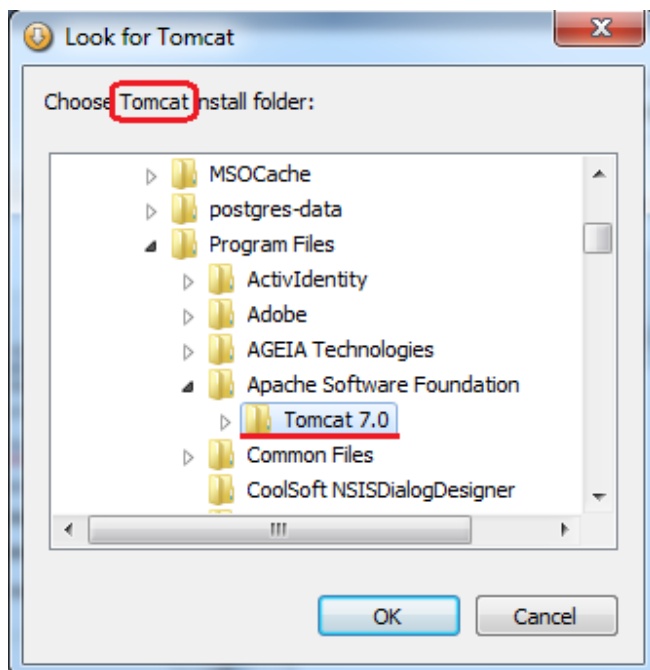


- Use the postgresql password. It will be also your dspace password.

Screen 8:

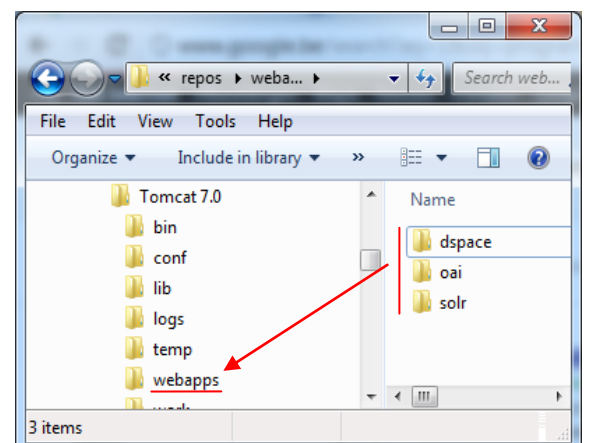


- It is important to install an email service in Dspace, surely when the repository is going on line.
- If you want simply do a test, don't enable sending an email.
- For registering and using the communication aspects of AgriOcean Dspace enable:
 - If you have your own mail server, simply fill out 1 and 2. If the system requires SMTP mail server authentication fill out 3 and 4. Ask your network manager.
 - You can always use gmail as your mail server. Use for 1 and 2 the default values. Create a gmail account. Fill out the gmail address in 3 and the password in 4.
 - You can reuse the gmail account as administrator's email or choose another one. All the e-mails sent and received will respectively come from and go to that address ().

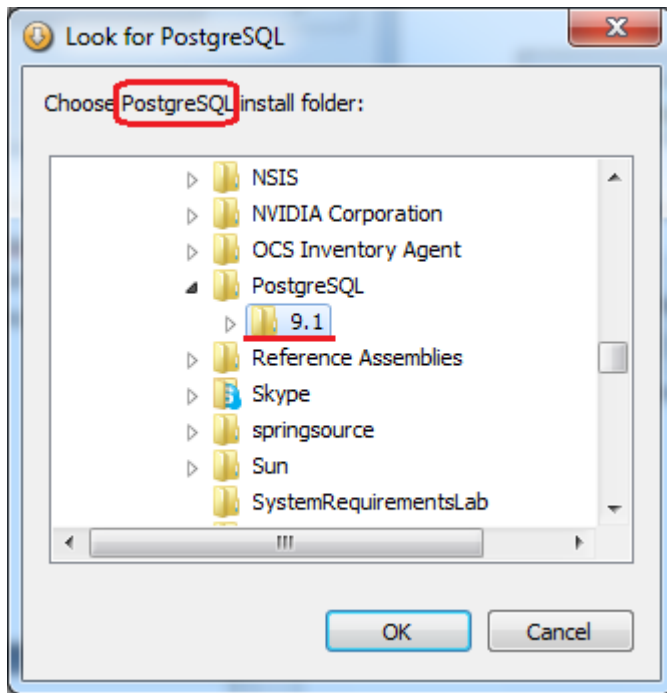


Pop-up 1:

The directory where Tomcat is installed has to be defined. Simply go to the main directory of Tomcat (normally: Program Files\Apache Software Foundation\Tomcat 7.0. If you have used Tomcat 6 it will have another directory name. If you have a 64bit Windows it can even be in another main directory, e.g. Program Files (x86)).

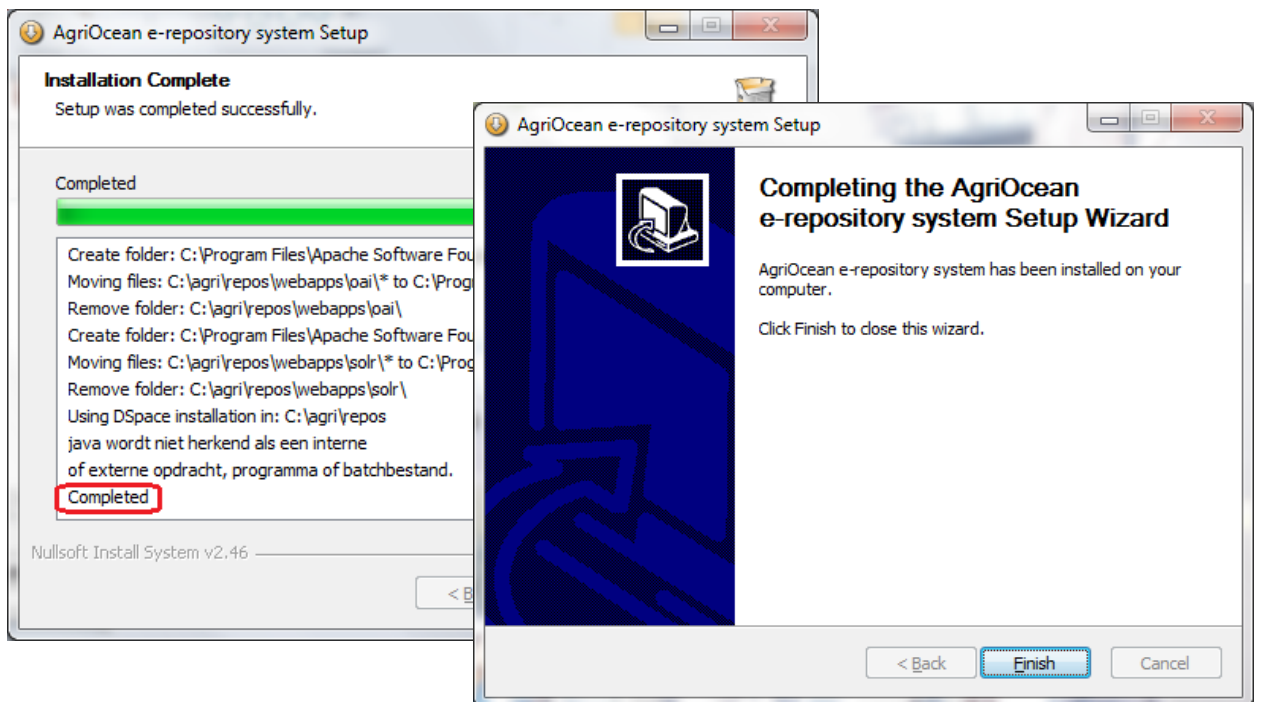


Only if the choice was not correct, you can move the web applications (directories dspace, solr, oai) manually from <AgriOcean destination folder>\repos\ webapps to <destination folder Tomcat>\webapps



Pop-up 2:
The directory where Postgresql is installed has to be defined. Simply go to the main directory of Postgresql version (normally: Program Files\Postgresql\<version n°>. If you have a 64bit Windows it can be installed in another main directory, e.g. Program Files (x86)).

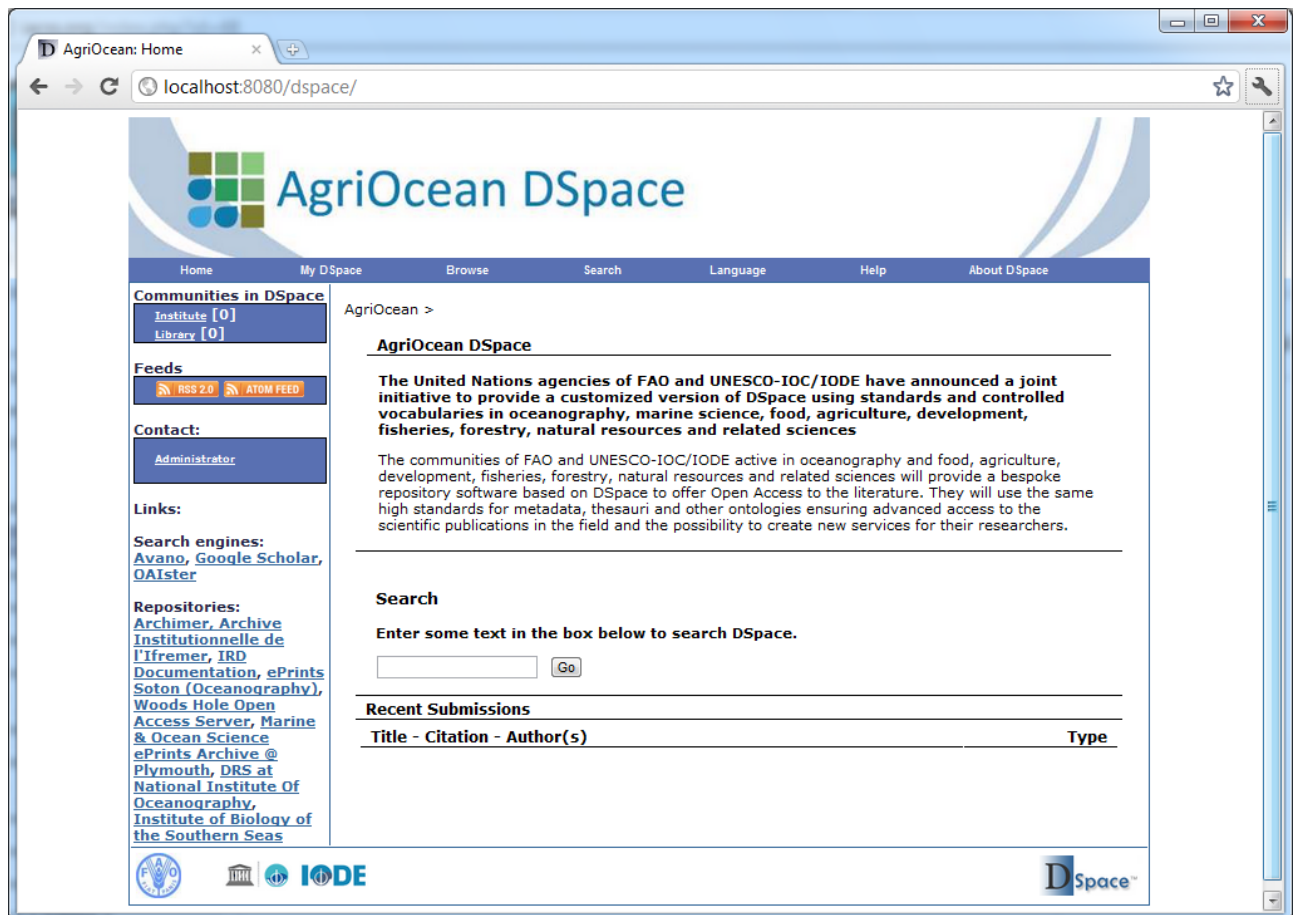
Screen 9-10:



- After clicking on next, it will take a few minutes before the AgriOcean Dspace is installed.

5. Finalization: Starting up the AgriOcean Dspace application.

If the instructions are followed then you can start the application in your web browser, standard on <http://localhost:8080/dspace> or <http://<hostname:port>/dspace> if you changed hostname and/or port.



The login in MyDspace is **agri@ocean** with password **agri**.

You can create your own administrator account from the command line:

c:\<agrioccean dir>\repos\bin\dspace create-administrator. Other users can simply create their account at 'My DSpace'. As Administrator you still have the task to give them the right to add documents to collections. Other commands are shown when you enter simply **c:\<agrioccean dir>\repos\bin\dspace.**

If you don't want to install the package immediately, you can do some tests at <http://193.190.8.15/dspace> with the login agri@ocean - password agri2012.

If you have problems with the installation, want to report bugs or have suggestions go to AgriOcean community page (<http://aims.fao.org/community/group/agrioccean-dspace>)

Marc Goovaerts
marc.goovaerts@uhasselt.be

Diepenbeek, February 10 2011.